

# **From The Coast**

Oliver Iredale Searle

## For Bass Clarinet in Bb and Fixed Media track

**Duration: ca.10'30"**

The performer should be positioned between two stereo speakers onstage.

### Performance Notes

The notated part is designed to fit with the fixed media track, so second indications (written above the staff) should be followed as closely as possible; each bar of music should be approximately 5" in duration.

Arpeggiate notes under dashed slurs (*In The Surf*) as quickly as possible, moving up and down each series of notes (starting in the order initially laid out) and re-articulating bass notes (with accents) where indicated; take a breath wherever required.

Brackets above some groups of notes indicate the length of certain musical cells; e.g. in *Foghorn Dreams*, these cells may be played in any order.

Similarly, in *The Dead Whale* (at 3'00"), boxes round certain groups of pitches indicate individual 'cells'. The player is free to build their own musical phrases by combining these in any order.

'Growl' - sing (any pitch), and approximate slide up to next pitch - this should be ugly!

The written multiphonics are those taken from Heather Roche's website ('20 Easy Bass Clarinet Multiphonics' and correlate to numbers: 279, 300 and 301.

Thick black lines indicate longer, sustained pitches; these occasionally also show the direction of a slow bend up/down, or include a short fall at the end of the gesture.

Commas indicate a short space (c.1") for breath at the end of a phrase.

Caesuras (tramlines) indicate a longer break of 2-5"

Some fermata are marked with a set number of seconds (e.g. ca.10"), which should be loosely followed.

### ***From the Coast***

We are now on a path towards a very different future, where young people's experiences of the natural world will be vastly different from mine. Even if we make drastic alterations to our way of living, and reduce our impact on the planet immediately, we will not see any positive changes for a very long time. The fixed media track in this work rolls onwards, and although the player has some control over certain musical decisions, the destination is set. This piece attempts to capture recollections of past engagement with the sea/coast; each of the sections are a frozen moment in time, never to be re-visited. All sounds on the backing track were recorded by Alex South, in a sea cave, just below The Scores, in St Andrews.

*In The Surf* - getting out of my depth in the water and panicking, while playing in large waves after a storm.

*Foghorn Dreams* - falling asleep to the sound of the foghorn on the island of Fidra (in the Firth of Forth).

*The Dead Whale* - memories of finding a dead Minke Whale, while playing on a beach on a grey day in North Berwick.

*Rowing in the Mist* - getting lost in the mist at sea in a rowing boat, while on a fishing trip.

For Alex South; commissioned by **sound**, for first performance in October 2021.  
Funded by the Hope Scott Trust

# From The Coast

**In the surf**  
Intense

Oliver Iredale Searle

Arpeggiate notes in each bar violently and repetitively ad lib.  
Each bar approx 5" in duration

10"

*ff*

20"

25" X1 ,

35"

*mf* *f* *mf*

45" Confidently

*f* *mf*

1'00"

1'10" slowing down ,

1'20" //

turn to breath sound  
(very slow bend up)

*mp* *mf* *mp* *p*

# The Dead Whale

Mournful

1'30" *mp* // *mf* (foghorn-like)

1'50" *mp* *mf* *mp* (1/4-tone bend)

2'00" *p* *mf* to breathy sound (ca.5") 2'15" (foghorn-like) *mf*

2'20" *mp* *mf* 2'30"

2'40" (ca.5") 2'45" (slow fall) 2'55" // *p* *mf* *pp* *sfzp* *mp* *mf*

Repeat cells in any order, in own time, for approx 1'20"

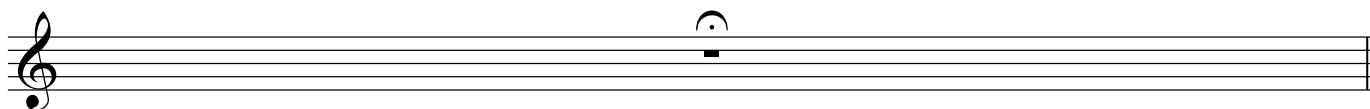
3'00" *mp* 4'20" (sim.) // *f* *f*

# Foghorn Dreams

Listening in the dark, from afar

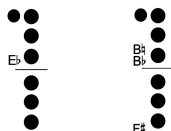
4'30"

(ca.30")



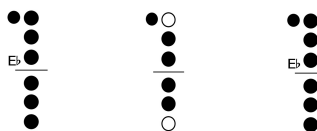
Smooth and Expressionless

Play bracketed cells in any order, and repeat as required, lasting approx 2 '15"



*Pulsing*

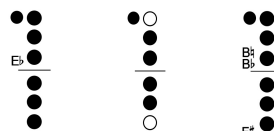
5'00" breathy sound-----slightly more pitched-----breathy sound



(sim.)



(sim.)



(sim.)

Fade out as next section begins

### Rowing in the mist

Frantically searching

7'20" (ca.10") 7'30" (slow fall)

*f* *f*

7'40" *mf* *f* *ff*

7'50" Silence (ca.5") 7'55" growl!

*sfz* *f*

8'00" 8'05" *sfzp* *f*

8'10" 8'15" *f* *mf* *f* *mf*

8'20" (growl) *sfz* *f*

8'30" *mf* *f*

Detailed description: This musical score is for a piece titled "Rowing in the mist" with the subtitle "Frantically searching". It consists of seven staves of music in a single system. The first staff begins at 7'20" with a half rest for approximately 10 seconds, followed by a melodic line starting at 7'30" marked with a forte (*f*) dynamic and a "slow fall" instruction. The second staff continues from 7'40" with dynamics ranging from mezzo-forte (*mf*) to fortissimo (*ff*). The third staff features a 5-second silence at 7'50" followed by a "growl!" instruction and a sforzando (*sfz*) dynamic, leading to a forte (*f*) section. The fourth staff starts at 8'00" with a sforzando piano (*sfzp*) dynamic that quickly transitions to forte (*f*). The fifth staff, beginning at 8'10", shows dynamics of forte (*f*), mezzo-forte (*mf*), forte (*f*), and mezzo-forte (*mf*). The sixth staff has a "growl" instruction at 8'20" and a sforzando (*sfz*) dynamic. The final staff starts at 8'30" with a mezzo-forte (*mf*) dynamic. The score includes various musical notations such as slurs, accents, and dynamic hairpins.

Repeat once

8'40"

*f* *mf* *mf*

Silence (ca. 10")

*f*

Repeat once

9'25"

(growl)

9'30"

*sfzp* *f* *f* *ff*

Slowing

10'00"

*f* *ff* *mp*

Finish with track (10'22")

*dim.* *p*