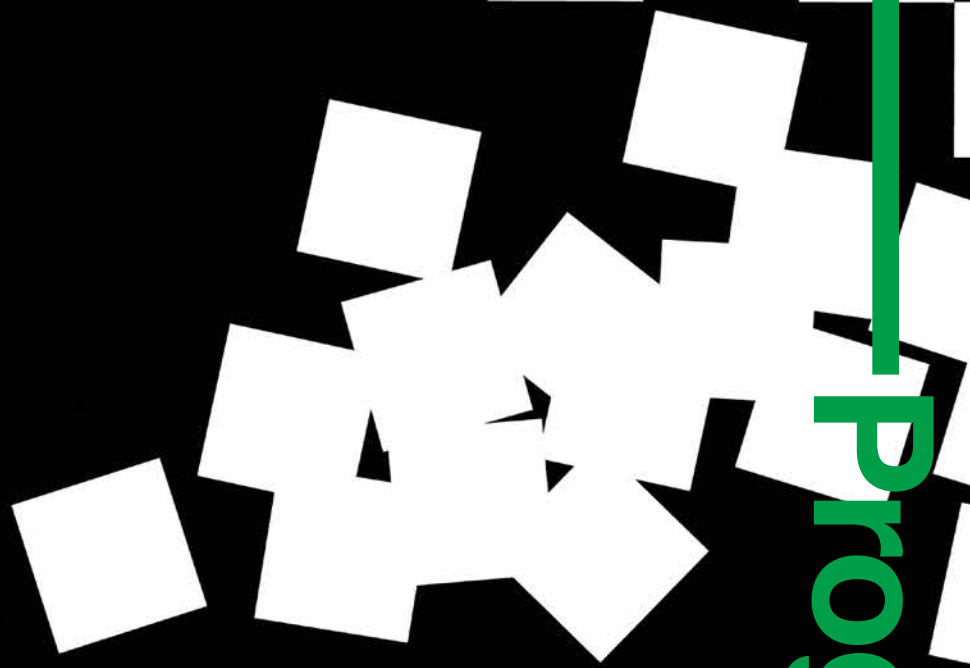




Royal Conservatoire
of Scotland

170

170 Years of Excellence in
Performing Arts Education



Programme

rsc.ac.uk

CHESS

THE MUSICAL

18 Mar – 1 Apr

@RCS_MT

Welcome

A very warm welcome to the Royal Conservatoire of Scotland's production of the Broadway and West End hit musical, *Chess*.

Sit back and enjoy the performance from students currently studying BA Musical Theatre, Bachelor of Music (Honours), BA Production Arts and Design and BA Production Technology and Management programmes.

When our students come together across disciplines, they create thrilling and enjoyable experiences for audiences and demonstrate the distinctiveness of our learning environment at RCS.

Musical theatre is an integral part of the RCS performance programme. In recent years our students have performed a wide range of classics including *Cabaret*, *Carousel*, *West Side Story*, *Little Shop of Horrors*, *Tommy*, *Legally Blonde*, and *9 to 5 The Musical*. You will be transported back to the 1980s and a Cold War world of political and personal tensions where chess is far more than a game.

Thank you so much for being here tonight to support our emerging artists and performers of the Royal Conservatoire of Scotland.

Enjoy the show!



Professor Jeffrey Sharkey
Principal

Welcome to our annual spring musical, here in the fabulous New Athenaeum Theatre. We're very fortunate to have this wonderful space as a resource for our technical, design, music and performance students to collaborate in.

We always look for work that will challenge all the departments and programmes across the RCS. *Chess* is by far the most technically ambitious production we've tackled to date. The story is set in the mid-80s, a time when the mass media was becoming ever-more present in the way we understand the world and report stories in the areas of politics, sport and celebrity culture.

Like other successful 80s musicals, including *Jesus Christ Superstar* and *Evita*, *Chess* was originally a concept album, released in 1984 before the West End premiere production in 1986. *Chess* was inspired by the famous real life Bobby Fischer and Boris Spassky match in 1972. Using the Cold War and the theatrical world of championship chess as a backdrop, the musical tells the story of two world champions in love with the same woman.

Once again, this process has been special because of the student, staff and guest creative team collaboration across all departments of RCS. Thanks for supporting our work.



Professor Andrew Panton
Artistic Director of Musical Theatre

Music by **Benny Andersson** and **Björn Ulvaeus**
Lyrics by **Tim Rice**
Based on an idea by **Tim Rice**

Sat 18 Mar – Fri 24 Mar
New Athenaeum Theatre
Royal Conservatoire of Scotland, Glasgow

Thu 30 Mar – Sat 1 Apr
Festival Theatre, Edinburgh

The video and/or audio recording of this performance by any means whatsoever is strictly prohibited.

This amateur production of *Chess* is presented by special arrangement with SAMUEL FRENCH, LTD.

 @RCS_MT

Contributors

The cast

Florence Vassy
Freddie Trumper
Anatoly Sergievsky
Alexander Molokov
Arbiter
Walter de Coursey
Svetlana Sergievsky
Ensemble:

Daisy Ann Fletcher
Barney Wilkinson
Jamie Pritchard
Shane Convery
Emma Torrens
Jacob Stein
Hayley VerValin
Aaron Kavanagh
Aidan MacColl
Emma Mullen
Hannah Pauley
Lorna McMillan
Kaitlin Reynell
Jillian Cunningham
Sam Willison
Stone Fuglaar
Emma Harding
Grace Galloway
Lydia White
Lukas Hickman
Max Alexander-Taylor
Meg Forgan
Pia Hagen
Ross Baxter

The band

Flute/Piccolo
Oboe/Cor anglais
Clarinet

Flute, Clarinet, Bass Clarinet
and Baritone Sax

Bassoon
Horn

Trumpet

Trombone

Drumkit
Percussion

Guitar
Keys 1
Keys 2
Keys 3

Violins

Cellos

Bass

Sally Palmer
Olivia Tomasovic
Osian Dance
Matas Scerbauskas
Ian Duguid

Gregory Crowley
Joey O'Neill
Isaac Wilsher
Mark James
Emily Stokes
Marcus Shanks
Jordan Robertson
Rebecca Butchart
David Kerr
Ciaran Campbell
Lewis Dunsmore
Robert Wilkinson
Shonagh Murray
Ryan Mackenzie
James Harrison
Sarah Jones
Joe Hodson
Alexandra Bragg
Gillian Grant
Amy Smart
Keena Wildman
Callum Cronin

Creative and production team

Director
Associate Director/
Choreographer
Musical Director
Designer/Video Designer
Lighting Designer
Sound Designer/Sound No.1
Assistant Director
Assistant Designer
Assistant Musical Directors

Dance Captains

Production Manager
Stage Manager
Deputy Stage Manager
Assistant Stage Managers

Technical Stage Manager
Fly Person
Stage Crew

Production Electrician
Lighting Programmer
Lighting Crew

AV Programmer
Production Sound Engineer
Sound Crew

Level 3 Wardrobe Assistants

Level 2 Wardrobe Assistants

Andrew Panton
Darragh O'Leary

David Higham
Kenneth MacLeod
Grant Anderson
Calum Paterson
Richard Cerato
Jennifer Logan
Shonagh Murray
Robert Wilkinson
Aidan MacColl
Emma Mullen

Lynfryn MacKenzie
Babette Wickham-Riddick

Ryan Davy
Rachel Matthews
James McQueen
Rosie Orford
Stuart Leech
Daryl Campbell
Simon McEwan
Jessica Reid
Monica Schmocker
Paddy Hepplewhite

Matt Turnbull
Jak Coventry
Adlai Faigen
Karyn Wilson
Fraser Walker

Jamie Ford
Allan Hamilton
Craig Stevenson
Marta Antunes
Cristina Butt
Sarah Carey
Isabelle Joyce

Bethan Aitken
Amy Copland
Eilidh Fraser
Jennifer Grubb
Katy Meehan
Sara Miller
Melissa Smith

Level 1 Wardrobe Assistants

Hair and Make-up Artist
Head Scenic Artist
Scenic Artists

Assistant Scenic Artists

Scenic Painters

Prop Makers

Set Construction

Nadia Anderson
Kayrin Fraser
Troen Halvarson
Lotta Heikkinen
Myrrin Hunter Urie
Eve Metcalfe
Danielle Miller
Emily Rankin
Kaighla Rose
Ursule Kerbedyte
Lindsay Denholm
Erika Lee
Ellis MacDonald
Sian-Louise Nelson
Vicky Blackaby
Amy Hastie
Jade Loudon
Jenni Murison
Natalia Salazar
Megan Yeomans
Joanne Curtis
Emily Rankin
Dylan Ross
Vicky Blackaby
Claudia Jevons
Leah Kurzepa
Jade Loudon
Natalia Salazar
Shakeel Anwer
Omar Bhatia
Ruth Green
Amy Hastie
Daniel Main
Megan Yeomans

Thanks to:

RCS Central Production Unit staff



The cast



Daisy Ann Fletcher

Theatre credits include: *Brigadoon, Notes to Self, Soul Food* (RCS); *Raintown* (Dundee Rep Theatre/RCS); *The Angel Awards 2015* (Royal Lyceum Theatre Edinburgh); *The Hired Man* (St. James Theatre/ National Youth Music Theatre); *Pronoun, Girls Like That* (West Yorkshire Playhouse); *U.Dance Festival* at Southbank Centre (Youth Dance England); *According to Brian Haw* at Riverside Studios, Hammersmith (Youth Music Theatre UK); *Chitty Chitty Bang Bang* (UK Tour, Alhambra Theatre) and *Annie* (Leeds Grand Theatre).

Television credits include: *In Plain Sight* (ITV).

Radio credits include: *BBC Children in Need - Pudsey Goes to the Musicals* (RCS/BBC Scottish Symphony Orchestra); *Little Red and The Wolf* (Noisemaker/ Dundee Rep Theatre).

Daisy is also the recipient of the Andrew Lloyd Webber Scholarship.



Barney Wilkinson

Theatre credits include: *Brigadoon, Soul Food, Notes to Self*, Musician - *Dick McWhittington* (RCS); *Identity Project* (Birmingham Repertory Theatre); *Raintown* (Dundee Rep Theatre/RCS) and *Royal Variety Gala Performance* (Theatre Royal).

Radio credits include: *BBC Children in Need - Pudsey Goes to the Musicals* (BBC Radio Scotland/BBC Scottish Symphony Orchestra).

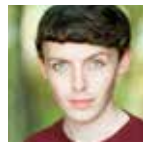
Barney is the recipient of the Ian Fleming Scholarship award.



Jamie Pritchard

Theatre credits include: *Brigadoon, Cabaret, Soul Food*, Musician - *Dick McWhittington* (RCS); Quartet - *At The Barbers* (National Theatre of Scotland); *Raintown* (Dundee Rep Theatre/RCS) and Musician - *Royal Variety Gala Performance* (Glasgow Theatre Royal).

Radio credits include: *BBC Children in Need - Pudsey Goes to the Musicals* (RCS/BBC Scottish Symphony Orchestra).



Shane Convery

Theatre credits include: *Brigadoon, Notes to Self, Soul Food* (RCS); *Raintown* (Dundee Rep Theatre/RCS); *Elegies for Angels, Punks and Raging Queens* (Liverpool Institute of Performing Arts); *Little Shop of Horrors* (Music Theatre 4 Youth) and *Nikki and The Gang* (Youth Music Theatre UK).

Radio credits include: *BBC Children in Need - Pudsey Goes to the Musicals* (RCS/BBC Scottish Symphony Orchestra).

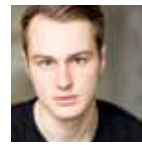


Emma Torrens

Theatre credits include: *Brigadoon, Soul Food, 24 Hour Plays and The Women of William, Notes to Self* (RCS); *Raintown* (Dundee Rep Theatre/RCS) and *The White Darkness* (Carnegie Book Festival).

Radio/recording credits include: *BBC Children in Need - Pudsey Goes to the Musicals* (RCS/BBC Scottish Symphony Orchestra) and *Little Red and the Wolf* (Noisemaker/Dundee Rep Theatre).

Emma is the recipient of the Ian Fleming Scholarship award.



Jacob Stein

Theatre credits include: *Brigadoon, Soul Food, Notes to Self* (RCS); *Raintown* (Dundee Rep Theatre/RCS) and *Julius Caesar* (Virginia Shakespeare Festival).

Radio credits include: *BBC Children in Need - Pudsey Goes to the Musicals* (RCS/BBC Scottish Symphony Orchestra).



Hayley VerValin

Theatre credits include: *Brigadoon, Cabaret, Soul Food* (RCS); *Raintown* (Dundee Rep Theatre/RCS); *Movies To Musicals* (Glasgow Philharmonia Orchestra); *Build Me Up Buttercup, Hairspray* (Cocoa Village Playhouse); *Oklahoma, Thoroughly Modern Millie* (King Center for the Performing Arts); *Shrek* (Starhawk Productions) and *Broadway's Jewish Legacies* (Ezra).

Radio credits include: *BBC Children in Need - Pudsey Goes to the Musicals* (RCS/BBC Scottish Symphony Orchestra).



Aaron Kavanagh

Theatre credits include: *Brigadoon, Notes to Self, Soul Food* (RCS); *Raintown* (Dundee Rep Theatre/RCS); *At the Barbers* (National Theatre of Scotland); *Showtime at the Musicals, Spectacular, Spectacular!, Little Shop of Horrors* (AMPM Cabaret Supper Club, Belfast); *Red Velvet Cabaret, Blood Brothers* (Tour - Northern Ireland); *Beauty and the Beast, The Producers, The King and I* (Theatre at the Mill, Newtownabbey); *The Breakfast Club* (Strand Arts Centre, Belfast); *Cinderella, Snow White and the Seven Dwarves, Aladdin* (Courtyard Theatre, Ballyearl) and *The 39 Steps* (Strand Arts Centre, Belfast).

Radio credits include: *BBC Children in Need - Pudsey Goes to the Musicals* (RCS/BBC Scottish Symphony Orchestra).

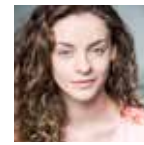


Aidan MacColl

Theatre credits include: *Brigadoon, Cabaret, Soul Food* (RCS); *Raintown* (Dundee Rep Theatre/RCS); *Betty Blue Eyes, The Drowsy Chaperone* (The Dance School of Scotland); *Trinity London Showcase* (Edinburgh Fringe Festival); *Spring Awakening* (Brickhouse Theatre); *Snow White and Sleeping Beauty* (SECC).

Television credits include: *Carrie and David's Popshop, Sports Relief Does Glee Club* (BBC); Semi-finalist with 'Dynamix' on 2012 (CBBC) and *Hummin'* (short film).

Radio credits include: *BBC Children in Need - Pudsey Goes to the Musicals* (BBC Radio Scotland/ BBC Scottish Symphony Orchestra).



Emma Mullen

Theatre credits include: *Brigadoon, Cabaret, Junk, Soul Food* (RCS); *Raintown* (Dundee Rep Theatre/RCS); *The Broons* (Sell A Door Theatre Company); *Go Sing, Season Preview, Annie* (Theatre Royal Glasgow); *Young Variety, Aladdin, Cinderella, Sleeping Beauty and Annie* (Kings Theatre Glasgow).

Television credits include: *The Wife* (Meta Film London Ltd); Opening Ceremony of Glasgow's 2014 Commonwealth Games (BBC); *The History of The Kings* (Kings Theatre Production) and *In Plain Sight* (ITV).

Radio credits include: *BBC Children in Need - Pudsey Goes to the Musicals* (RCS/BBC Scottish Symphony Orchestra).



Hannah Pauley

Theatre credits include: *Brigadoon, Cabaret, Soul Food, The Wolfman* (RCS); *Raintown* (Dundee Rep Theatre/RCS) and *Into the Woods, Guys and Dolls, How to Succeed in Business Without Really Trying* (Pittsburgh CLO Theatre); *Beauty and the Beast, Boeing Boeing, 100 Lunches* (Fox Chapel Theatre); *Recycling Plastics* (New Hazlett Theatre).

Television credits include: *In Plain Sight* (ITV).

Radio credits include: *BBC Children in Need - Pudsey Goes to the Musicals* (RCS/BBC Scottish Symphony Orchestra).



**Lorna
McMillan**

Theatre credits include: *Brigadoon*, *Notes to Self*, *Soul Food*, *Home - A New Musical* (RCS); *Raintown* (Dundee Rep Theatre/RCS); *Songs for a New World* (Jazzart Studios); *Aladdin* (Motherwell Civic); *Annie* (Hamilton Town House) and *Go Dance* (Theatre Royal).

Television credits include: *Sports Relief Does Glee Club* (BBC).

Radio/concerts credits include: *Movie Magic Concert* (Stirling Orchestra); *BBC Children in Need - Pudsey Goes to the Musicals* (RCS/BBC Scottish Symphony Orchestra) and *Little Red and The Wolf* (Noisemaker/Dundee Rep Theatre).



**Kaitlin
Reynell**

Theatre/Dance credits include: *Brigadoon*, *Notes to Self*, *Soul Food* (RCS); *Raintown* (Dundee Rep Theatre/RCS); *Legally Blonde* (Company J); *Love's Labour's Lost* (Atlanta Shakespeare Company); *Bye Bye Birdie* (Stage Door Players) and *Forsythe Ballet Showcase* (American Dance Festival).

Film credits include: *Holding on by a String* (Edinburgh 48 Hour Film Festival) and *Sing to The Stars* (World Oceans).

Radio/concert credits include: *BBC Children in Need - Pudsey Goes to the Musicals* (RCS/BBC Scottish Symphony Orchestra); Fundraiser (Merchant's House Glasgow); *Little Red and The Wolf* (Noisemaker/ Dundee Rep Theatre); Regional Finalists Concert (Michael Feinstein's Great American Songbook Competition) and Winners Concert for Classical and Musical Theatre (National Association of Teachers of Singing).



**Jillian
Cunningham**

Theatre credits include: *Brigadoon*, *Cabaret*, *Soul Food* (RCS); *Raintown* (Dundee Rep Theatre/RCS); *Grease*, *RENT* and *All Shook Up* (Motherwell College).

Television credits include: *Elephant Therapist* - Bella and the Bear music video (Ally Scott), *Broken Hearts* - short film (Kirsty Elliot).

Radio credits include: *BBC Children in Need - Pudsey Goes to the Musicals* (RCS/BBC Scottish Symphony Orchestra) and *Sleeping Beauty* (Real Radio).



**Sam
Willison**

Theatre credits include: *Brigadoon*, *Notes to Self*, *Soul Food* (RCS); *Raintown* (Dundee Rep Theatre/RCS); *Keep the Home Fires*, *Trinity London Showcase* (Edinburgh Fringe Festival); *The Last Five Years* (Mad Props Theatre); *Betty Blue Eyes*, *The Drowsy Chaperone* (The Dance School of Scotland).

Television credits: *About Sevenish* (short film) and featured soloist - *BBC Children in Need 2012* (BBC Scotland).

Radio/recording/concert credits: Featured soloist - *BBC Children in Need - Pudsey Goes to the Musicals* (RCS/BBC Scottish Symphony Orchestra); *Little Red and the Wolf* (Noisemaker/ Dundee Rep Theatre); Guest soloist (Dreghorn Musical Society Spring Concert) and *Glasgow Carols Concert for Cancer Research UK* (Glasgow Cathedral).

Sam was also a finalist in The Young Scottish Musical Theatre Performer of the Year 2016 at the SECC.



**Stone
Fuglaar**

Theatre credits include: *Brigadoon*, *Notes to Self*, *Soul Food* (RCS); *Raintown* (Dundee Rep Theatre/RCS) and *Fame* (Midland Theatre).

Radio credits include: *BBC Children in Need - Pudsey Goes to the Musicals* (RCS/BBC Scottish Symphony Orchestra).

Second year students

Emma Harding

Theatre credits include: *The False Corpse* (Edinburgh Fringe Festival); *Side Show* (Guildford School of Acting) and *Spring Awakening* (Rhoda Theatre).

Television credits include: *I Love Lunch* - short musical film (Edward Kondracki).

Radio credits include: Recorded backing vocalist - *BBC Children in Need - Pudsey Goes to the Musicals* (RCS/BBC Scottish Symphony Orchestra).

Grace Galloway

Theatre credits include: *Glued* (RCS); *Annie*, *Evita*, *Whistle Down the Wind*, *Joseph and his Amazing Technicolor Dreamcoat* (UK Tour, Liverpool Empire Theatre); *U.Dance Festival* (The Lowry, Salford Quays); *Snow White and the Seven Dwarfs* (Royal Court, Liverpool); *Sleeping Beauty* and *Smile Together* (Smile Productions, St Helens Theatre Royal).

Television credits include: *Do u wanna be in my gang*, *Do u STILL wanna be in my gang?* (Families Fighting for Justice, short film).

Radio credits include: Backing vocalist - *BBC Children in Need - Pudsey Goes to the Musicals* (RCS/BBC Scottish Symphony Orchestra).

Lydia White

Theatre credits include: Andrew Panton's Professorial Address, Pianist - *Glued* (RCS); Solo voice - *Ariadne* (Britten Sinfonia, Cultural Olympiad); Performer - *Kerrigan and Lowdermilk*, *The London Concerts* (St. James Studio); Finalist in the *Stephen Sondheim Society Student Performer of the Year Award 2015*, (Garrick Theatre) and *The Angel Awards 2015*, (Royal Lyceum Theatre Edinburgh).

Television credits include: *Disconnection 2016*, (Benjamin Meads, Official selection, screen test); Birdseye adverts (May and June 2014); Recorded backing vocalist - *BBC Children in Need - Pudsey Goes to the Musicals* (RCS/BBC Scottish Symphony Orchestra).

Lukas Hickman

Theatre credits include: *Rent* (Sixth Street Productions, Sixth Street Playhouse); *Hairspray* and *The Bastard Tom Jones* (Roustabout Theatre, Luther Burbank Centre).

Max Alexander-Taylor

Theatre credits include: *Little Shop of Horrors* (Rudolf Steiner House); *The Promised Land* (The Old Red Lion Theatre); *Sweeney Todd* (The Hammond Theatre) and *My Kind of Sunday* (Theatre Royal Drury Lane).

Television credits include: *I love Lunch* - short film (Edward Kondracki)

Meg Forgan

Theatre credits include: *Glued* (RCS); *The Coolidge Effect* (Glue Factory); *Skunk, Homegrown* (National Youth Theatre); *Evita*, *Annie* (UK Tour, York Grand Opera House).

Pia Hagen

Theatre credits include: *Sonnets for an Old Century*, *Thrones! The Musical* (Edinburgh Fringe Festival); *Spring Awakening*, *Into the Woods*, *Secret in the Wings* and *Miss Saigon* (Interlochen Arts Academy).

Film / recording credits include: *We're Okay* (After Hours Student Film Festival); *Border Woods* (National Film Festival for Talented Youth) and choir vocalist (Pinewood Studios).

Ross Baxter

Theatre credits include: *Bonnie & Clyde* - Scottish Premier, *Boogie Nights*, *The 25th Annual Putnam County Spelling Bee*, *Grease*, *Jack and the Beanstalk* (Motherwell College).

Television credits include: *BBC Children in Need - Pudsey Goes to the Musicals* (RCS/BBC Scottish Symphony Orchestra).

Creative and production

Andrew Panton Director

Andrew is Artistic Director of Musical Theatre at RCS and the Artistic Director of Dundee Rep Theatre. He has held directing residencies at the Royal & Derngate, Perth Theatre and The Stephen Joseph Theatre, where he directed a premiere season of Sir Alan Ayckbourn's work. He has directed productions for the National Theatre of Scotland, Dundee Rep Theatre and The Royal Lyceum, Edinburgh.

TV credits include: *BBC Children in Need, The Naked Choir* and *Tonight's the Night* for the BBC.

Andrew directed *Susan Boyle in Concert* for her UK and US tours and worked on her last six albums. He directed a section of the *Glasgow 2014 Commonwealth Games Opening Ceremony*.

Darragh O'Leary Associate Director/ Choreographer

Choreography credits include: *Spring Awakening* and *A Man of No Importance* (RCS); *Little Red & The Wolf* (Dundee Rep Theatre); *The Sword in the Stone, Sinbad* (New Wolsey); *Saturday Night Fever* (English Theatre Frankfurt); *The Battle of Boat* (Rose Kingston); *Snoopy* (Ivy Arts Centre for GSA); *Prodigy* (St. James for National Youth Music Theatre); *Sing to the Flags* (Southbank Centre); *Passport to Pimlico* (Grassroots Productions); Assistant Director and Choreographer - *West Side Story* (HMP Erlestoke for Pimlico Opera); *Red Riding Hood* (Everyman) and *The Lazy Elf* (Arts Theatre).

Credits as Movement Director include: *A Dream* (Sheffield Crucible); *Brainstorm* (BBC: Live from Television Centre, National Theatre & Park Theatre) and *Nicola Benedetti* at Kelvingrove Museum.

Other credits include: Choreography Co-ordinator - *Opening Ceremony of the Glasgow 2014 Commonwealth Games*; Mass Choreographer - *Opening Ceremonies of the Sochi 2014 Olympic and Paralympic Winter Games*; Mass Movement Assistant

- *Opening and Closing Ceremonies of the London 2012 Olympic and Paralympic Games*; Assistant Choreographer - *Opening Ceremony of the 2016 FA Cup Final*; Director and Co-writer - *The Bowly Years* (Jermyn St Theatre & Union Theatre).

www.darragholeary.co.uk

David Higham Musical Director

David Higham is a Musical Director based in Scotland. He currently co-ordinates the MA Musical Directing and BA Music strands within the programme and works in many theatres across Scotland as a Musical Director/Orchestrator and Vocal Coach.

Musical Director credits include: *The Choir* (Citizens Theatre, Glasgow/ ATG), *Cabaret, Our House, Betty Blue Eyes, Little Shop Of Horrors, Into the Woods* (RCS), Actor Musician Rearrangement/Musical Director - *Godspell* and *Return to the Forbidden Planet, Notes to Self* (RCS); *Dance Derby* (Company Chordelia/Scottish Opera); *Jack and the Beanstalk, Cinderella* (The Beacon, Greenock), *Jerry Springer the Opera, Spring Awakening* (The Fringe, Edinburgh, One Academy Productions); Musical Director/Orchestrator - *The Wizard of Oz* (Citizens Theatre, Glasgow).

Kenneth MacLeod Designer/Video Designer

Kenneth is an RCS Production Arts and Design graduate and is now a set, costume and video designer.

Recent credits include: *Cabaret, West Side Story* (RCS); *Never Land, Not About Heroes* (Eden Court Theatre); *Money Makes The World Go Round* (Carnival/P&O Cruises). He was also a semi-finalist in the Linbury Prize for Stage Design 2015 and a recipient of the Alex McCrindle Award for Production.

Kenneth also studied Scenic Design & Immersive Themed Entertainment at The California Institute Of The Arts.

More of his work can be seen at www.kenneth-macleod.com

Grant Anderson Lighting Designer

Previous RCS work includes: *Cabaret, 9 to 5, Urinetown, Adams Family* (Nominated for Best Lighting Design, Broadway World West End Awards 2014), *Godspell, Avenue Q, Sunday In The Park With George, Company, Wasted Love, Show Choir, Active Virgin, Towards The Moon, Freak Show, Forest Boy and The Girl Who*.

Other selected credits include: *Alan Cumming Sings Sappy Songs* (Edinburgh International Festival); *The Broons* (Sell A Door Theatre Company); *Cuttin' A Rug, Simon's Magical Christmas Socks, Panic Patterns* (Citizens Theatre); *To Begin* (National Theatre of Scotland Learn); *Love Song, Little Red And The Wolf, In My Father's Words, Hecuba, Promises Promises, Baby Baby* (Dundee Rep Theatre); *The Polar Bears Go Wild* (MacRobert, Stirling); *News, Just In* (Random Accomplice); *And The Beat Goes On* (Perth Theatre & Random Accomplice); *Wendy Hoose* (Birds of Paradise & Random Accomplice); *Summer on Stage 2012 - 2016* (The Lyceum Theatre, Edinburgh); *The Snaw Queen, Maw Broon Monologues* (Tron Theatre) and *A Clockwork Orange* (Theatre Royal Stratford East).

Grant has also designed extensively for the Scottish events industry, including: Botanic Lights 2015 Seasons In Colour and 2016 EXPLORE, Royal Botanic Garden Edinburgh; Edinburgh's Hogmanay Torchlight Procession & Street Party, including the 2017 Midnight Moment. www.grantanderson.design

Calum Paterson Sound Designer and Sound No.1

Calum is a BA Production Technology and Management (Sound) student.

Previous RCS work includes: Sound Designer - *The Snow Queen, The House of Bernarda Alba, Earthquakes in London*; Production Engineer - *Dream On!* (BBC Arts Live); Sound No.2 - *Dick McWhittington*; Head of Flys - *Kidnapped*; Lighting Programmer - *Modern Ballet Showcase*; Follow Spot Operator - *West Side Story*; Assistant Stage Manager - *Sir John in Love*.

Other work includes: Venue Sound Technician - *Dance Base* (Edinburgh Festival Fringe), *Underbelly* (Edinburgh Festival Fringe) and Production Electrician - *ABBA Mania*.

Richard Cerato Assistant Director

Performing credits include: *Soul Doctor* (Original Broadway Cast); *Joseph and the Amazing Technicolor Dreamcoat* (US Tour); *Cinderella, Fame* (International Tour/with Lea Salonga); Writer/Director - *Tokyo Heights* short film (premiered at the 18th Annual MIFo Film Festival in Miami).

Richard can be seen playing the trumpet in 'Shake it Off' by Taylor Swift.

Jennifer Logan Assistant Designer

Writer/Director - *Tokyo Heights* short film (premiered at the 18th Annual MIFo Film Festival in Miami).

Previous RCS work includes: Designer - *The Cage, Costume Maker/ Arts Department - Dreamboats and Babydolls* (short film), Arts Department - *Cassandra* (music video for Hello Creepy Spider), *Hello* (short film), *Freedom* (music video), Set Dresser - *A Midsummer Horror* (short film) and *Me and The Moon* (music video).

Other work includes: Design Assistant - *The Inchcolm Project*.

Shonagh Murray Assistant Musical Director

Shonagh is a BA (Hons) Applied Music PDGE Secondary Music Education student focusing on voice.

Musical Director and composing credits include: *Hemmed In - A New Musical* (Edinburgh Fringe), *Home - A New Musical, Christmas at the Conservatoire* and the Glasgow Gospel Choir (RCS).

Robert Wilkinson Assistant Musical Director

Theatre credits include: Musical Director - *Off Broadway: Full House!, The Parody Musical, Katdashians, Avenue Q, Rent, Legally Blonde, Hair, Marvellous Wonderettes, The Sound of Music, Spamalot*; Choreographer/Musical Director - *Forever Plaid* (RCS) and Director/Musical Director - *Joseph and the Amazing Technicolor Dreamcoat* (Lower Ossington Theatre).

Robert is the Co-artistic Director for Tool Kit Inc, a collective creation company based in Toronto.

Babette Wickham-Riddick Stage Manager

Babette is a BA Production Technology and Management (Stage Management) student.

Previous RSC work includes: Stage Manager - *Scavengers, ISTA Theatre Festival 2016, Deputy Stage Manager - Brigadoon, Earthquakes in London*, Assistant Stage Manager - *The Strange Case of Jekyll and Hyde, Sir John in Love, Wolfman*, Lighting Programmer - *'Tis Pity She's a Whore, Charlie Sonata*; Stage Electrician - *Romeo and Juliet, Sound No.2 - Swingin' Into Christmas, Merrily We Roll Along*, Technical Stage Manager - *Notes to Self*, Stage Crew - *Mother Goose* and Production Summer Assistant.

Other work includes: Stage Manager - *RCS MA Musical Theatre Showcase*, Assistant Stage Manager - Bard in the Botanics and Venue Manager - Garden Theatre (Edinburgh International Book Festival).

Ryan Davy Deputy Stage Manager

Ryan is a BA Production Technology and Management (Stage Management) student.

Previous RCS work includes: Stage Manager - *Brigadoon*, Deputy Stage Manager - *Circle of Fifths*, Assistant Stage Manager - *Romeo and Juliet, 'Tis a Pity She's a Whore, Kidnapped, King Lear, Edward II, Other Crew - 13* (Tron Theatre), *Merrily We Roll Along, Swinging Into Christmas* and *Our House*.

Other work includes: Production Crew - *Scorched* (Open Sky Productions, Edinburgh Festival Fringe); *Cymbeline* (Virginia Shakespeare Festival); Sound Operator - Pop Up Theatre Event (Panglossian Productions); Director - *Pippin, The Sunshine Boys and The Fantasticks* (The Library Players).

Stuart Leech
Technical Stage Manager

Stuart is a BA Production Technology and Management (Technical Stage Management) student.

Previous RCS work includes: Technical Stage Manager - *The Snow Queen, Earthquakes in London, The Circle of Fifths*, Head Fly Person - *Dick McWhittington*, Stage Technician - *Kidnapped, West Side Story*, Head Electrician - *Romeo & Juliet, 'Tis Pity She's A Whore* and Assistant Electrician - *Sir John in Love*.

Other work includes: Operations Operative (SECC); Venue Technician (Beacon Arts Centre); Operations Coordinator (3D Exhibitions) and various freelance work.

Paddy Hepplewhite
Production Electrician

Paddy is a BA Production Technology and Management (Lighting) student.

Previous RCS work includes: Lighting Designer - *Macbeth*; Production Electrician - *Brigadoon, Earthquakes in London, Notes to Self*, Follow Spot Operator - *Mother Goose*, Sound Designer - *King Lear, Edward II*, Deputy Stage Manager - *One Night Only, Wet Dream*, Lighting Crew - *Kidnapped, Merrily We Roll Along* and Technician - *Into The New*.

Other work includes: Lighting Crew (Citizens Theatre); Venue Crew at Edinburgh Festival Fringe (New Town Theatre, Pleasance Theatre); Technician - *Guts*, Take off Festival 2013.

Matt Turnbull
Lighting Programmer

Matt is a BA Production Technology and Management (Lighting) student.

Previous RCS work includes: Production Electrician - *The Snow Queen*, Technical Stage Manager - *Romeo and Juliet, 'Tis Pity She's a Whore*, Deputy Production Electrician - *The Strange Case of Jekyll and Hyde* and Follow Spot Operator - *Wolfman*.

Other work includes: Senior Technician - *FEVA Festival* (Frazer Theatre) and Assistant Stage Manager (York Grand Opera House).

Jamie Ford
Production Sound Engineer

Jamie is a BA Production Technology and Management (Sound) student.

Previous RCS work includes: Sound Designer - *Brigadoon, The Burial at Thebes*, Sound No. 1 - *Candid Cabaret* and *Return to the Forbidden Planet*.

Other work includes: Qlab and DiGiCo Programmer - *The Broons* (Scottish Tour); Sound No. 2 - *Glamis Prom* (Glamis Prom Ltd); *The Witches* (Dundee Rep Theatre); Front of House Engineer - *Star & Garter Stage* (Party At The Palace).

Marta Antunes
Wardrobe Assistant

Marta is a BA Production Arts and Design (Costume Construction) student.

Previous RCS work includes: Costume Maker - *The Snow Queen, Brigadoon, The Burial at Thebes, The House of Bernarda Alba, Sir John in Love*, Costume Maker/Dresser - *Dick McWhittington, Owen Wingrave*, Costume/Prop Maker - *BINGE* (short film) and Assistant Prop Maker - *Cabaret*.

Other work includes: Make-up Artist - *Writer's Block* (Escola Superior de Teatro e Cinema); Make-up Artist and Wardrobe Assistant - *Um Cadáver Chamado Alfredo* (Escola Superior de Teatro e Cinema).

Cristina Butt
Wardrobe Assistant

Cristina is a BA Production Arts and Design (Costume Construction) student.

Previous work at RCS includes: Costume Maker - *The Snow Queen, Brigadoon, The Burial at Thebes, The House of Bernarda Alba, Owen Wingrave, Sir John in Love, Mother Goose*, Costume Maker/Maintenance - *Cabaret*, Costume Maker/Dresser - *Dick McWhittington* and Costume Supervisor and Hairstylist - *Nott* (music video).

Sarah Carey
Wardrobe Assistant

Sarah is a BA Production Arts and Design (Costume Construction) student.

Previous RCS work includes: Costume Maker - *The Snow Queen, Brigadoon, The Burial at Thebes, The House of Bernarda Alba*, Costume Maker/Dresser - *Dick McWhittington, Owen Wingrave*, Dresser - *Earthquakes in London*, Wardrobe Assistant/Dresser - *The Wolfman*, Head of Wardrobe - *Night's Dream* (short film), Wardrobe Assistant - *My Shadow And Me* and Wardrobe Assistant - *The Addams Family*.

Isobelle Joyce
Wardrobe Assistant

Isobelle is a BA Production Arts and Design (Costume Construction) student.

Previous RCS work includes: Costume Maker - *The Snow Queen, Brigadoon, The Burial at Thebes, The House of Bernarda Alba*, Costume Maker/Dresser - *Dick McWhittington, Cabaret, Earthquakes in London* and Costume Maker - *Owen Wingrave*.

Other work includes: Costume Assistant - *Mother* (Feature Film, New Light Films); Hair and Make-up Assistant - *Creative Choices Event* (West Yorkshire Playhouse); Dresser - *Catwalks Management and Event Fashion Show*.

Ursule Kerbedyte
Head Scenic Artist

Ursule is a BA Production Arts and Design (Scenic Art) student.

Previous RCS work includes: Scenic Artist - *The Snow Queen, Brigadoon, The Burial at Thebes, The House of Bernarda Alba, Earthquakes in London, Owen Wingrave, Cabaret, Dick McWhittington, Merrily We Roll Along, The Strange Case of Jekyll and Hyde*, Assistant Scenic Artist - *Sir John in Love, West Side Story* and *Mother Goose*.

Lindsay Denholm
Scenic Artist

Lindsay is a BA Production Arts and Design (Scenic Art) student.

Previous RCS work includes: Scenic Artist - *Macbeth, The Snow Queen, Brigadoon, The Burial at Thebes, The House of Bernarda Alba, Dick McWhittington, Cabaret, Owen Wingrave, Greylag* (short film), Assistant Scenic Artist - *West Side Story, Sir John in Love, Art Department - Skin Deep* and Prop-finisher - *Disnegated* (Exhibition funded by the Equality and Diversity Forum).

Other work includes: Painter - *Humans of Deaf People*, Scenic Artist - *Eve* (CBBC); *Glasgow Girls* (Edinburgh Festival Fringe); Scenic Construction - *Scare Maze* (Alton Towers).

Erika Lee
Scenic Artist

Erika is a BA Production Arts and Design (Scenic Art) student.

Previous RCS work includes: Scenic Artist - *The Snow Queen, Brigadoon, The Burial at Thebes, The House of Bernarda Alba, West Side Story, Sir John in Love, Dick McWhittington, Cabaret, Owen Wingrave, Kidnapped, Merrily We Roll Along, Earthquake in London* and *Construction Carpenter - 13, Cabaret*.

Other work includes: Scenic Artist - *Return to the Forbidden Planet* (Barnard Castle School, 2016).

Ellis MacDonald
Scenic Artist

Ellis is a BA Production Arts and Design (Scenic Art) student.

Previous RCS work includes: Co-Head Scenic Artist - *The Snow Queen*, Scenic Artist - *Brigadoon, The Burial at Thebes, The House of Bernarda Alba, Earthquakes in London, Owen Wingrave, Cabaret, Dick McWhittington, Greylag* (short film), Assistant Prop Maker - *13, Charlie Sonata*, Assistant Scenic Artist - *Sir John in Love, West Side Story* and *Mother Goose*.

Other work includes: Scenic Construction Assistant - *Scarefest* (Alton Towers).

Sian-Louise Nelson
Scenic Artist

Sian-Louise is a BA Production Arts and Design (Scenic Art) student.

Previous RCS work includes: Co-Head Scenic Artist - *The Snow Queen*, Scenic Artist - *Brigadoon, The Burial at Thebes, The House of Bernarda Alba, Earthquakes in London, Dick McWhittington, Cabaret, Owen Wingrave, Mother Goose, West Side Story, Sir John in Love* and Prop Maker - *13*.

Other work includes: Assistant Scenic Artist - *Death of a Salesman* (Dundee Rep Theatre).

Jenni Murison
Assistant Scenic Artist

Jenni is a BA Production Arts and Design (Props) student.

Previous RCS work includes: Prop Maker - *The Snow Queen, Brigadoon, The House of Bernarda Alba, Merrily We Roll Along, Dick McWhittington, Cabaret, Owen Wingrave, Earthquakes in London, A Night's Dream* (short film), Art Department Assistant - *Our Father* (DFTV Graduation Film), Scenic Artist - *Cabaret* and Production Artist - RCS DFTV Summer School 2014.

Other work includes: Prop Maker - *The Mikado, Rusalka, Ariodante, Inés Des Castro* (Scottish Opera); Glasgow Commonwealth Games Ceremonies (Jack Morton Worldwide); Puppeteer/Prop Maker - Summer Extravaganza Parade (Bridgeman Arts); Scenic Artist - *Boys* (Open Letter Theatre Company); Selected Artist - RSA New Contemporaries (National Gallery of Scotland).

Leah Kurzepa
Prop Maker

Leah is a BA Production Arts and Design (Props) student.

Previous RCS work includes: Prop Maker - *The Snow Queen, Brigadoon, Cabaret, Dick McWhittington, Sir John in Love, Mother Goose, Ovalution* (short film), Prosthetics Artist - *UHTE* (in collaboration with DFTV and Shakespeare 400 Festival).

Other work includes: Standby Props/Prop Maker - *Perfect Worlds* (short film).

Jade Loudon
Prop Maker and Assistant Scenic Artist

Jade is a BA Production Arts and Design (Props) student.

Previous RCS work includes: Prop Maker - *The Snow Queen, Brigadoon, Earthquakes in London, Owen Wingrave, Cabaret, Sir John in Love, Dick McWhittington, Merrily We Roll Along, Mother Goose, Our House*, Scenic Artist - *West Side Story* and Prosthetics Assistant - RCS Prosthetics Summer School.

Other work includes: Scenic Construction Assistant - *Scarefest* (Alton Towers).

Natalia Salazar
Prop Maker and Assistant Scenic Artist

Natalia is a BA Production Arts and Design (Props) student.

Previous RCS work includes: Prop Maker - *The Snow Queen, Brigadoon, Earthquakes in London, Owen Wingrave, Cabaret, Dick McWhittington, Merrily We Roll Along, Sir John in Love, Mother Goose*; Prosthetics - *UHTE* and Special Effects - *Night's Dream* (short film).

Other work includes: Assistant Prop Maker - *These Delicate Things* (Centre for Contemporary Arts).

Ways to support RCS

Scholarship Fund

RCS is a special place, offering a distinctive education in the performing arts. We believe that students of great potential should be nurtured and developed, whatever their personal circumstances. Every investment in an RCS scholarship, however modest, brings this life-changing experience within reach of another individual.

Join our Company of Donors

The Company of Donors is the membership programme for supporters of RCS. By becoming a company member you will be part of a valued family of supporters and receive unique insight and opportunities into life at the Royal Conservatoire. From behind-the-scenes access to priority booking for all of our shows, you will benefit from being part of the Company of Donors, as well as know that you have played your part in supporting the success of our students.

Take Your Seat

For a minimum donation of £250, you can select and dedicate your favourite seat in the New Athenaeum Theatre, Stevenson Hall or Ledger Recital Room. Whether you wish to mark a special occasion, commemorate a loved one, or give as a special gift, we'd love you to 'Take Your Seat'. A personalised plaque will be attached to the seat of your choice.

Leave a Legacy

Leaving a gift in your will makes a lasting impact on the future work of RCS and our students. By choosing to leave a legacy to us, your gift will go directly to the RCS Scholarship Fund, managed by the Trustees of the Royal Conservatoire of Scotland Trust. If you choose to, you can leave a scholarship to a specific area or discipline and your legacy will be used according to your wishes.

For further information about ways to support the Royal Conservatoire of Scotland, please contact **Katie McCorkindale**, Development Manager:
0141 270 8264 / k.mccorkindale@rcs.ac.uk

We would like to thank the following individuals and organisations for their generous support. Also, thank you to those who prefer to remain anonymous.

Company of Donors

Meranna Amersteig
 Evelyne Anderson
 Peter Armit
 Geoff and Mary Ball
 John Bogle
 The Lord Cameron
 Of Lochbroom
 Helen Chalmers
 G I M Chapman
 Valerie Charlton
 Tam and Kathleen Dalyell
 Margaret Derome
 Sir James Dunbar Nasmith
 Marina Fordom
 Eric Galt
 Betty Gardner
 Beth Gibb
 Lady Gibson
 Brian Gilda & Family
 John B Gray
 Josephine Haythornthwaite
 J Douglas Home
 James and Linda Hoskins
 Andrea Jack
 Stephen Joffe
 Neil Laidlaw
 Helen Laird
 A & J Lawson
 Katharine Liston
 Douglas MacColl
 Alan MacFarlane
 Lord MacLean
 Eileen MacKay
 John and Susan Mavor
 Gordon & Anne McCorkindale
 Thomas McCreery
 Catherine McGuinness
 James A McWilliam
 Maureen Michie
 Morag C Millar
 Alistair Montgomerie
 Bernard and Jane Nelson
 Richard Parry
 Gerry Paton
 David Seers
 Dr Myra Soutar, FRSAMD
 Sheriff Alastair Stewart, QC
 Michael and Elizabeth Sudlow
 Arfan Wazir
 J L M White
 Feodor and the late
 Walter Wolfe

Individual Scholarships

Dennis and Anne Archer
 Kenneth Barritt
 Scholarship Fund
 Robert Bowman
 Sir Sandy Crombie
 William Dale
 Margaret Derome
 Morrison Dunbar
 Charlotte Duthie
 Sir Gerald Elliot
 Serena Fenwick
 James Forson
 Dr Aubrey Gerber
 Joyce Goodwin
 John and Jane Griffiths
 Martin Haldane
 Colin Hamilton and
 Kulgin Duval
 Wren Hoskyns-Abraham
 Sir Patrick Hunter Blair
 Sir Tom Hunter
 Michael and
 Elisabeth Hutchings
 Michael and Sarah Innes
 Prof Dr Aileen Keel
 Nick Kuenssberg
 Christine Lessels
 Katharine Liston
 Pat MacCowan
 Alan MacFarlane
 John MacIntyre
 Memorial Fund
 Arnold and Anna Maran
 Mary Marquis
 James McAvo
 Caroline McFarlan
 Iain McGlashan
 James McLaren
 Toby McLaughlan
 Memorial Fund
 Margaret McLeod
 Gill Reynolds
 Agnes Robson
 The Rosin Family in
 memory of Hilary Rosin
 John and Caroline Sibbald
 Henrietta Simpson
 Lady Smith
 Mike Spring
 James Stretton
 Maurice V Taylor
 Professor and
 Mrs Raymond Thomson
 Tatiana Webster
 Ulrike Wilson
 Andrew Womersley
 Hedley G Wright

Organisation Scholarships

Andrew Lloyd Webber
 Foundation
 Agnes Allan Bequest
 Bursary
 Thomas Allan, Robert
 and Catherine Shearer
 Entrance Scholarship
 for Violin
 Ardkinglas Arts Trust
 ABRSM
 Baillie Gifford & Co
 The Baird Educational Trust
 Barcapel Foundation
 The Binks Trust
 Cambuslang Rotary Club
 Caram Trust
 WA Cargill Fund
 Mrs Anne Clutterbuck
 Charitable Trust
 Elsa and Leonard
 Cross Charitable Trust
 Daebnitz Travelling
 Scholarship
 EMI Music Sound
 Foundation
 The Hugh Fraser
 Foundation
 The Lysbeth
 Fulton Scholarship
 The Elizabeth
 Fyfe Scholarship
 Mary Garden Scholarship
 Garfield Weston Foundation
 The Garmthor Trust
 Glendoune Charitable Trust
 Jennie S Gordon
 Memorial Foundation
 The Lena and Robert
 Hillman Postgraduate
 Travelling Scholarship
 The Lena Hillman
 Entrance Scholarship
 Inches Carr Trust
 Independent Opera
 Jamieson Memorial Fund
 JTH Charitable Trust
 The Keepers of The Quaich
 The King Family Fund
 Jack Lamond
 Guitar Scholarship
 The Leverhulme Trust
 The Mackintosh Foundation
 Mary D MacLagan Award
 for Pianoforte
 John Mather
 Charitable Trust
 The Janet McKay Innes
 Scholarship
 Col William McMurdo
 Currie Memorial
 Scholarship

The Merchants House
 Of Glasgow
 The Ena Mitchell
 Scholarship
 Murray Scholarship
 The Bill and Margaret Nicol
 Charitable Trust
 The Estate of
 Dr Anne MEI Peel
 PF Charitable Trust
 The Rhona Reid
 Charitable Trust
 Richmond Douglas
 Charitable Trust
 The Robertson Trust
 The Thomas and
 Margaret Roddan Trust
 Sackler Trust
 Savoy Club Trust
 The Jimmy Shand
 Scholarship
 The Thomas Sivewright Catto
 Charitable Settlement
 Sophie's Silver Lining Fund
 Tillett Trust Postgraduate
 Bursaries
 The Trades House
 Of Glasgow
 Underwood Trust
 The William Syson
 Charitable Foundation
 W M Mann Foundation
 The Wolfson Foundation
 Yamaha Music UK Ltd
 Ye Cronies

Corporate Supporters

AON
 Clyde & Co
 Corney & Barrow
 The Gleneagles Hotel
 Liberty Living
 Scott-Moncrieff
 Smith & Williamson



WHITE BURGUNDY

Love Story



SPARKLING BLANC DE BLANCS

Comedy



SLOE GIN

Tragedy



CLARET

Thriller



Which style will you choose?